



WARN Industrial Winch

Model

Part Number

Motor Type

**Series 18-A-2D
Severe Duty Winch
Manual Clutch**

80907

DC Electric
24 Volt
Series Wound

The Severe Duty Series 18 DC features waterproof construction and superior corrosion resistance. The powerful series wound motor with its thermal protection switch combined with an optional Overload Interrupt switch and heavy duty disc brake, provide excellent durability, safety, and performance.



- *Wire Rope 1/2"x75' EIPS assembly included
- *Winch comes with CARC coating
- *Wire Rope Tension Kit included
- *Roller fairlead included

Accessories

Description:
Remote Control Assembly, 10m
Remote Control Assembly, 12'

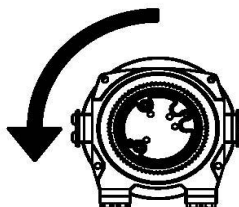
Part Number
85394
77671

Engineering Data

Rated Pulling Force:	18000 lbf	8165 kgf
Drum Barrel Diameter:	4.0 in	102 mm
Drum Flange Diameter:	8.24 in	209 mm
Distance Between Flanges:	9.95 in	253 mm
Recommended Maximum Wire Rope Diameter:	1/2 in	12.7 mm
Recommended Minimum Wire Rope Breaking Strength:	26600 lbf	12066 kgf
Approximate Shipping Weight:	178.0 lb	80.7 kg
Duty Cycle (intermittent per SAE J706 section 6.2):	N/A	N/A
Mounting Bolt Torque:	35 - 40 ft*lbf	47 - 54 N*m
Maximum Layers of Wire Rope:	3	
Gear Reduction:	315:1	
Brake Type:	Disk	

Contact / Remote Type: Industrial contactor with no remote

Drum Rotation



Viewed from Motor End

Standards Compliance

1. -SAE J706

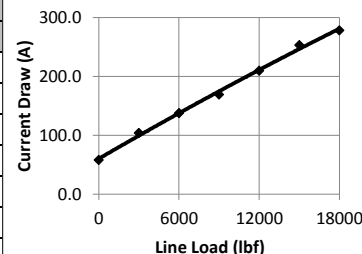
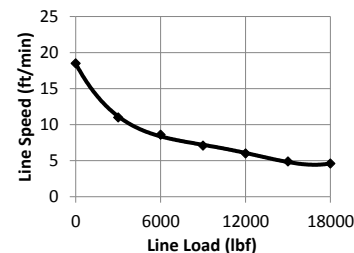
Performance By Layer- 1/2" (12.7 mm) dia. rope

Drum Layer	Line Load *			No Load Line Speed		Drum Capacity	
	lbf	kgf	kN	ft/min	m/min	ft	m
1	18000	8165	80.1	18.5	5.6	20	6.1
2	14727	6680	65.5	22.2	6.8	45	13.7
3	12462	5653	55.4	26.7	8.1	75	22.9

* Never exceed the Rated Pulling Force. Installation of a Rated Capacity Limiter is recommended.

First Layer Performance

Line Load		Current Draw	Line Speed		Duty Cycle
lbf	kgf	Amps	ft/min	m/min	min/10min
0	0	58.1	18.5	5.6	4.3
3000	1361	104.0	11.0	3.4	2.0
6000	2722	137.8	8.6	2.6	1.5
9000	4082	169.4	7.1	2.2	1.2
12000	5443	209.7	6.0	1.8	0.9
15000	6804	253.2	4.9	1.5	0.7
18000	8165	278.2	4.6	1.4	0.7



WARN INDUSTRIES, INC
Industrial Products

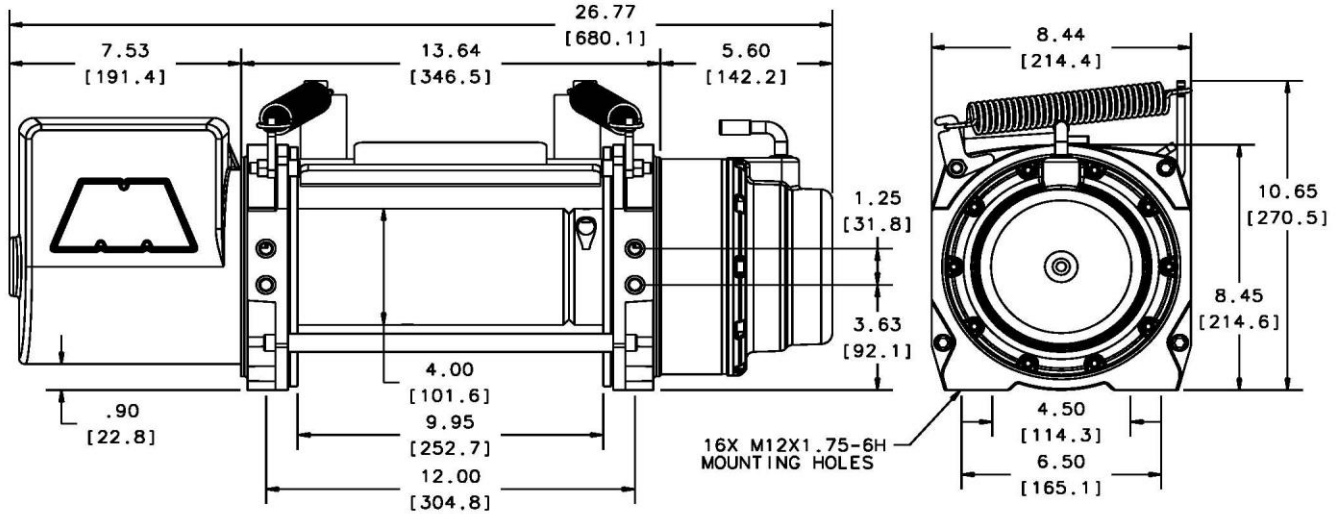
Customer Service (North America): 1.800.543.9276
Customer Service (International): 1.503.722.3008
FAX: 1.503.722.3000 www.warn.com

12900 S.E. Capps Road,
Clackamas, OR USA 97015



WARN Industrial Winch

Model	Part Number	Motor Type
Series 18-A-2D Severe Duty Winch Manual Clutch	80907	DC Electric 24 Volt Series Wound



Motor / Contactor may be rotated in 90 degree increments. Clutch housing may be rotated in 72 degree increments.

Units are given in inches [millimeters], unless otherwise specified

Recommended Mounting- Always Observe Correct Drum Rotation

Electrical System Specifications

Pull from bottom of winch



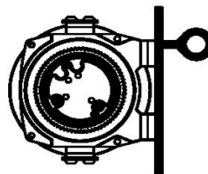
Feet down

Pull from bottom of winch



Feet forward

Pull from top of winch



Feet forward

Pull from top of winch



Feet down without angle brace

Pull from top of winch



Feet down with angle brace

Pull from top of winch



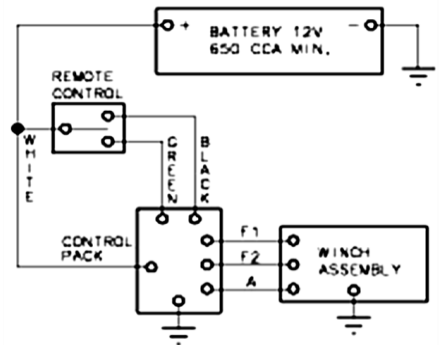
Angle Braces Only

650 CCA Battery Minimum

See Electrical Cable Gauge Size Chart for cable sizing

All electrical connections must be clean and tight

Electrical System Wiring Schematic



Notes:

WARN INDUSTRIES, INC
Industrial Products

Customer Service (North America): 1.800.543.9276
Customer Service (International): 1.503.722.3008
FAX: 1.503.722.3000 www.warn.com

12900 S.E. Capps Road,
Clackamas, OR USA 97015